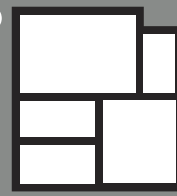


BUTTERFIELD[®] COLOR



A SIKA BRAND

Perma-Cast[®]

Antiquing Release

Select Grade[®]

Antiquing Release

Perma-Tique[®]

Antiquing Agent

Please indicate when ordering

- Perma-Cast[®] Antiquing Release: **R#**
- Select Grade[®] Antiquing Release: **SGR#**
- Perma-Tique[®] Antiquing Agent: **PT#**



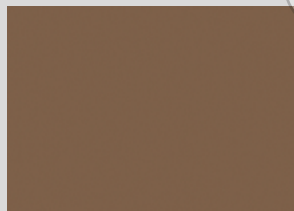
R12/SGR12/PT12 Storm Gray



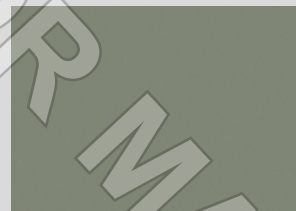
R13/SGR13/PT13 Deep Charcoal



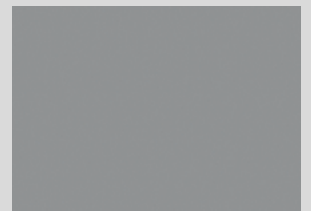
R23/SGR23/PT23 Smoke



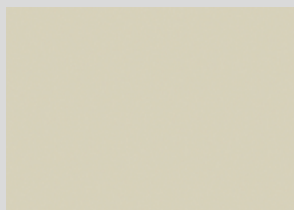
R18/SGR18/PT18 Chestnut



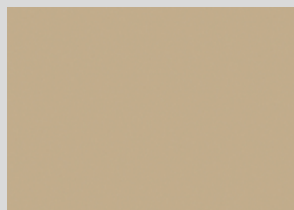
R28/SGR28/PT28 Slate Gray



R26/SGR26/PT26 Cape Cod Gray



R32/SGR32/PT32 Bone



R24/SGR24/PT24 French Cream



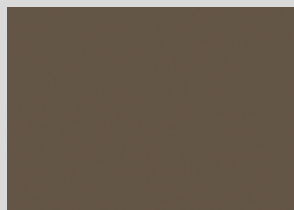
R29/SGR29/PT29 Wheat



R22/SGR22/PT22 Arena Buff



R25/SGR25/PT25 Colina Tan



R14/SGR14/PT14 Walnut



R19/SGR19/PT19 Russet



R15/SGR15/PT15 Brick Red

Many things can affect the appearance of color. For best color matching results, a representative job site sample should be cast using materials and finishing techniques that will be used on the project.

Colors shown on this chart represent the color of the release powder. When the release powder is applied to colored concrete and stamped, the two colors will combine and create variations of color. The amount of release color retained after washing will also vary depending on the condition of the concrete when it was stamped.

Perma-Cast[®]

Select Grade[®]

Antiquing Release

Antiquing Release

Description: Perma-Cast[®] Antiquing Release and Select Grade[®] Antiquing Release are colored powder bond breakers used with stamping mats, texturing skins and texture rollers. The products provide accent colors that complement or contrast with the underlying concrete surface. Additionally, they enhance the transfer of the detailed pattern and texture, and prolong the surface life of the stamping mat or texturing tool. They are compatible with integrally colored concrete, color hardened concrete and stampable cementitious overlays. Perma-Cast[®] Antiquing Release and Select Grade[®] Antiquing Release are finely ground, streak free powders that are a blend of UV-resistant pigments and water repelling additives. Broadcast Perma-Cast[®] Antiquing Release or Select Grade[®] Antiquing Release over the concrete surface prior to placing the stamping or texturing tools. As the imprinting tool is pressed into the plastic concrete surface, a portion of the antiquing release is embedded into the textured surface of the concrete. When the tool is removed, it breaks cleanly, without marring the colored concrete surface. Upon washing and sealing, the difference in color between the base concrete and the release creates a visually attractive antiqued look on the concrete. The added color visually enhances the depth of the texture. The amount of release agent retained on the concrete will vary. Use a Perma-Cast[®] Antiquing Release or Select Grade[®] Antiquing Release color that matches or contrasts with the concrete color. Add a combination of colors to create interesting shading and highlights on the finished concrete surface. Perma-Cast[®] Antiquing Release is available in 14 standard colors (R#), as well as colors selected from the Perma-Shake[®] Color Hardener color chart. The release colors formulated from Perma-Shake[®] Color Hardener colors will not be an exact match to concrete colored with those shake-on colors. Custom colors and color matching are available with ample lead-time, without up charges or minimums.

Select Grade[®] Antiquing Release is only available in 14 standard colors (SGR#). Custom colors and color matching are not available.

Limitations: Do not use Perma-Cast[®] Antiquing Release and Select Grade[®] Antiquing Release on the same installation. Unacceptable color and texture variations may occur. Do not use Perma-Cast[®] Antiquing Release or Select Grade[®] Antiquing Release as the primary coloring agent. Do not trowel or float the concrete surface after the release powder is applied. Do not use as a curing compound. Perma-Cast[®] Antiquing Release and Select Grade[®] Antiquing Release will produce variegated colors and is a function of concrete mix design, timing, method of application and removal, method of imprinting, and weather. Avoid over application, which may minimize the depth of texture. Cover and protect adjacent surfaces from contamination during application and residue removal. Consider using Perma-Cast[®] Clear Liquid Release if contamination is a concern, particularly on interior applications or when imprinting cementitious overlays. Perma-Cast[®] Antiquing Release and Select Grade[®] Antiquing Release are retained on the surface by a mechanical bond. A sealer application is required to enhance the longevity of the antiqued coloration. **Packaging:** Perma-Cast[®] Antiquing Release and Select Grade[®] Antiquing Release are packaged in plastic pails. Shelf life is indefinite when stored in original, unopened containers, in dry storage. **Coverage:** Perma-Cast[®] Antiquing Release: Approximately 1,000-1,200 sq. ft. (93-111 m²) per 30 lb. (13.6 kg) pail, Select Grade[®] Antiquing Release: Approximately 750-1,000 sq. ft. (70-93 m²) per 30 lb. (13.6 kg) pail. **Quality Control:** Cast a job site sample at least 21 days prior to the installation for approval of color and finish. Utilize all materials, tools, and techniques from the actual job in the mock-up. Consistent batching, pouring, finishing, curing, sealing, and preparation techniques, will ensure the uniformity of architectural concrete. Verify adequate wet and dry slip resistance. Verify maintenance requirements. Site visits by Butterfield Color, Inc. Personnel are for making technical recommendations only and not for supervising or providing quality control.

Perma-Tique[®]

Antiquing Agent

Perma-Tique[®] Antiquing Agent: Perma-Tique[®] Antiquing Agent is used to antique unsealed hardened textured concrete and unsealed overlaid textured surfaces. Perma-Tique[®] Antiquing Agent mixes with water and is applied to the concrete surface to add a natural antiquing color to newly textured concrete, overlays or old weathered textured surfaces.

FOR PROFESSIONAL USE ONLY. Prior to use of any Butterfield Color, Inc. product, the user must always read and follow the warnings and instructions on the product's most current Technical Data Sheet, product label and Safety Data Sheet which are available online at www.butterfieldcolor.com or at 800-282-3388. Nothing contained in any Butterfield Color, Inc. materials relieves the user of the obligation to read and follow the warnings and instruction for each Butterfield Color, Inc. product as set forth in the current Technical Data Sheet, product label and Safety Data Sheet prior to product use.

LIMITED WARRANTY AND DISCLAIMER – EXCLUSIVE REMEDY: Butterfield Color, Inc. ("BC") warrants that this product conforms to its published specifications when it is shipped. THIS LIMITED WARRANTY IS THE EXCLUSIVE WARRANTY AND THERE ARE NO OTHER WARRANTIES, EXPRESSED OR IMPLIED, INCLUDING IMPLIED WARRANTIES OF MERCHANTABILITY OR FITNESS FOR A PARTICULAR PURPOSE. BC does not warrant any particular method of use or application of the product or its performance under any particular condition. If this product does not conform to its published specifications when shipped, we will replace the product as your exclusive remedy. Any action for breach of the limited warranty or any other liability arising from this product must be brought within 90 days of receiving the product. BC is not liable for consequential damages or personal injury arising from the use, storage or handling of this product.

