

PATTERN SELECTION GUIDE



This brochure is offered as a visual aid. When precise color matching is required, a job site sample is recommended.

The Quality of Butterfield Color® Products is Unique.
Accept no Substitutes for your Project!

We are excited to help you achieve your vision and ensure it becomes reality. In the pages ahead we hope to open your eyes to a world of unparalleled distinction and choices. From interior flooring to exterior hardscapes, nothing quite compares to the versatility and reliability of colored and stamped concrete. Butterfield Color® has spent decades developing and perfecting the coloring and tools used in stamped concrete, resulting in our exclusive line of decorative concrete products.

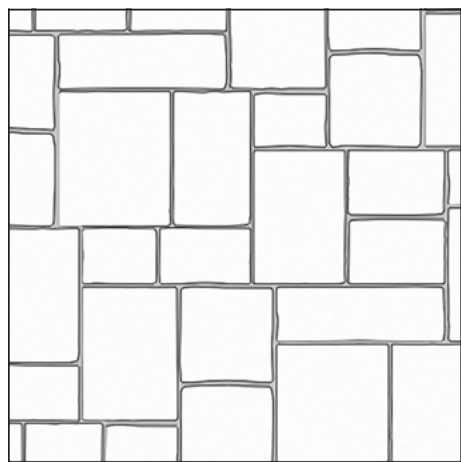
Every Butterfield Color® employee understands that this is a very important project for you and your family. Please understand that it is important to us as well. Our business is based on the success of every project and the happiness of each and every customer that uses our products. Please use this catalog and the appropriate physical Butterfield Color® color chart(s) as a guide to helping you make choices for your project. **This brochure is offered as a visual aid. When precise color matching is required, a job site sample is recommended.**

THE STAMPED CONCRETE PROCESS

Before you begin your selection process it is important that you have a basic understanding of the stamped concrete process. Please understand that this is a brief overview only and should you have further questions, we encourage you to talk with your contractor, reach out to one of our distributors, or contact us.

PATTERN

In the pages ahead you will see **over 75 patterns** to choose from and in each picture there is a unique color combination. Assuming



you have chosen a basic location for your stamped concrete, you can now focus on your vision of the final product. Stamped concrete can be broken into five basic pattern types: **Brick, Stone, Slate, Wood and Texture.** Obviously these are just basic categories,

but using these as a reference will help you narrow down which patterns to look at first. One basic element to consider is to complement your existing hardscape or interior decor rather than trying to “match” existing surfaces and the surroundings.

BASE COLOR

Now that you have chosen your pattern, you need to pick your colors. Most stamped concrete has two colors: a **base color** and an **accent color**. There are two ways to create the base color for new concrete: **integral color** and **color hardener**. With either method the end result of your stamped concrete will emphasize this color.

Integral Color: Integral color is mixed into the concrete in the truck. The color is either added at the concrete plant or on the project

site before pouring begins. Integral color is the most common way to color concrete and Butterfield Color® offers a premium integral color system called **Uni-Mix® Integral Concrete Color.**

The Uni-Mix® Integral Color System is the preferred system of contractors, specifiers and owners. Uni-Mix® Integral Concrete Color has proprietary ingredients that make it unique. Our competition will try to “match” our color, but it has been our experience and quite a few dissatisfied customers' experience, that the color does not turn out the same. If you are choosing from our color charts, require that the contractor use our color to ensure success in your job. A quick and simple way to ensure this is to request the lot numbers of the color before they pour.



Color Hardener: An alternate way to color concrete is to use shake-on color hardener. Butterfield Color® **Perma-Cast® Shake-on Color Hardener** is broadcast on the concrete during the initial stages of the finishing process and is worked into the surface to create the base color. Not all contractors use color hardener, so be sure to discuss this with your contractor prior to choosing colors. Color hardener will create the base color similar to integral color, but also has **additional coloring options** and creates a hardened more dense surface.

RELEASE COLOR

Release agent is used to keep the stamp from sticking during the stamping process. The release agent will also offer an accent color to the concrete once washed and sealed. When picking the release color, be sure to use a color that accents your base color. Usually a darker release agent over a lighter base color works best.



STAMPING

Immediately following the application of the release agent your contractor will begin the stamping process by tamping the stamping tools into the concrete surface. The texture and/or pattern is created as the tool is pressed into the concrete. As the imprinting tool is pressed into the concrete surface, a portion of the colored release agent is embedded into the textured surface of the concrete.

WASHING AND CUTTING

Your contractor will wash and cut the concrete slab once the concrete is ready, which is usually 12-24 hours after the concrete is poured. Although you may not want saw cuts and think they may take away from the natural look, they are absolutely necessary. Be sure to discuss the location of saw cuts with your contractor prior to pouring the concrete so that you are prepared once he begins.

Once the area is thoroughly cleaned, you will see the integral color with accents of the release color. However, final colors will not appear until the concrete is sealed and fully cured.

SEALING

Discuss sealer options with your contractor. Butterfield Color® offers a premium line of curing and sealing products called **Clear Guard® Cure & Seal**. These products have become the chosen brand for decorative concrete applications. Understand that sealed surfaces may be slippery during application, prior to drying, and when wet with water or liquids after drying. Use of a non-slip additive when sealing is recommended on exterior applications and a non-slip wax on interior applications. If you are looking for more of a matte finish ask about Butterfield Color® Flattening Paste.

MAINTENANCE

Maintaining your newly stamped concrete is important. Periodically inspect cured and sealed surfaces for wear or damage. All concrete curing and sealing compounds will eventually exhibit the effects of weathering and traffic. For maximum coating life and performance, wipe up all chemical solvent or petroleum spills as soon as possible. Remove abrasive debris by sweeping or vacuuming. Do not drag, drop or place sharp edges on sealed surfaces. Periodic washings with mild detergents will help maintain surface luster. Do not use solvent or acid-based cleaning materials for general cleaning. Hot car tires or turning tires while car is standing may damage the sealer. Surfaces that will be subjected to car traffic, de-icing salts or chemical exposure may exhibit wear more quickly. In most cases, stamped concrete does not need to be sealed every year. A build-up of sealer can cause delamination issues, so be sure to discuss re-sealing with your contractor.

**BASE
COLOR**



**RELEASE
COLOR**



STAMPED

WASHED



SEALED



THANK YOU FOR CHOOSING BUTTERFIELD COLOR®!!

Let us know about your project. Send us pictures of your job to email@butterfieldcolor.com and contact us if you have further questions. We have the best distribution network that have knowledgeable sales personnel and in most cases on-site samples of our products. For a complete listing of our distributors, to see our extensive gallery of projects, or for more information on our products please visit www.butterfieldcolor.com.



MAJESTIC ASHLAR

BASE COLOR: U16 HARVEST WHEAT RELEASE COLOR: R23 SMOKE



**INFIELD: MAJESTIC ASHLAR
BORDER: HEAVY STONE TEXTURE**

BASE COLOR: U26 LANON STONE RELEASE COLOR: R23 SMOKE



MAJESTIC ASHLAR

BASE COLOR: U35 SHADOW SLATE RELEASE COLOR: R28 SLATE GRAY

Borders stained with Perma-Cast® Sierra Stain®. Refer to Perma-Cast® Sierra Stain® color chart.



MAJESTIC ASHLAR

BASE COLOR: U16 HARVEST WHEAT RELEASE COLOR: R14 WALNUT



MAJESTIC ASHLAR

BASE COLOR: U26 LANON STONE RELEASE COLOR: R12 STORM GRAY



MAJESTIC ASHLAR

BASE COLOR: U29 SOAPSTONE RELEASE COLOR: R26 CAPE COD GRAY



MAJESTIC ASHLAR

BASE COLOR: U27 MOCHA BROWN RELEASE COLOR: R12 STORM GRAY



The City of Aurora, Illinois chose the **Ashlar Slate** pattern to evoke an old English garden setting in their renovation of Sunken Gardens Park. Coloring the hardscape with **Uni-Mix® U35 Shadow Slate** antiqued with **Perma-Cast® R28 Slate Gray** further enhanced the Old World feeling. This project was awarded the 2002 National Landscape Grand Award.





ASHLAR SLATE

BASE COLOR: U14 PEWTER RELEASE COLOR: R12 STORM GRAY



ASHLAR SLATE

BASE COLOR: U15 CORAL BUFF RELEASE COLOR: R14 WALNUT



ASHLAR SLATE

BASE COLOR: U18 GULL GRAY RELEASE COLOR: R12 STORM GRAY



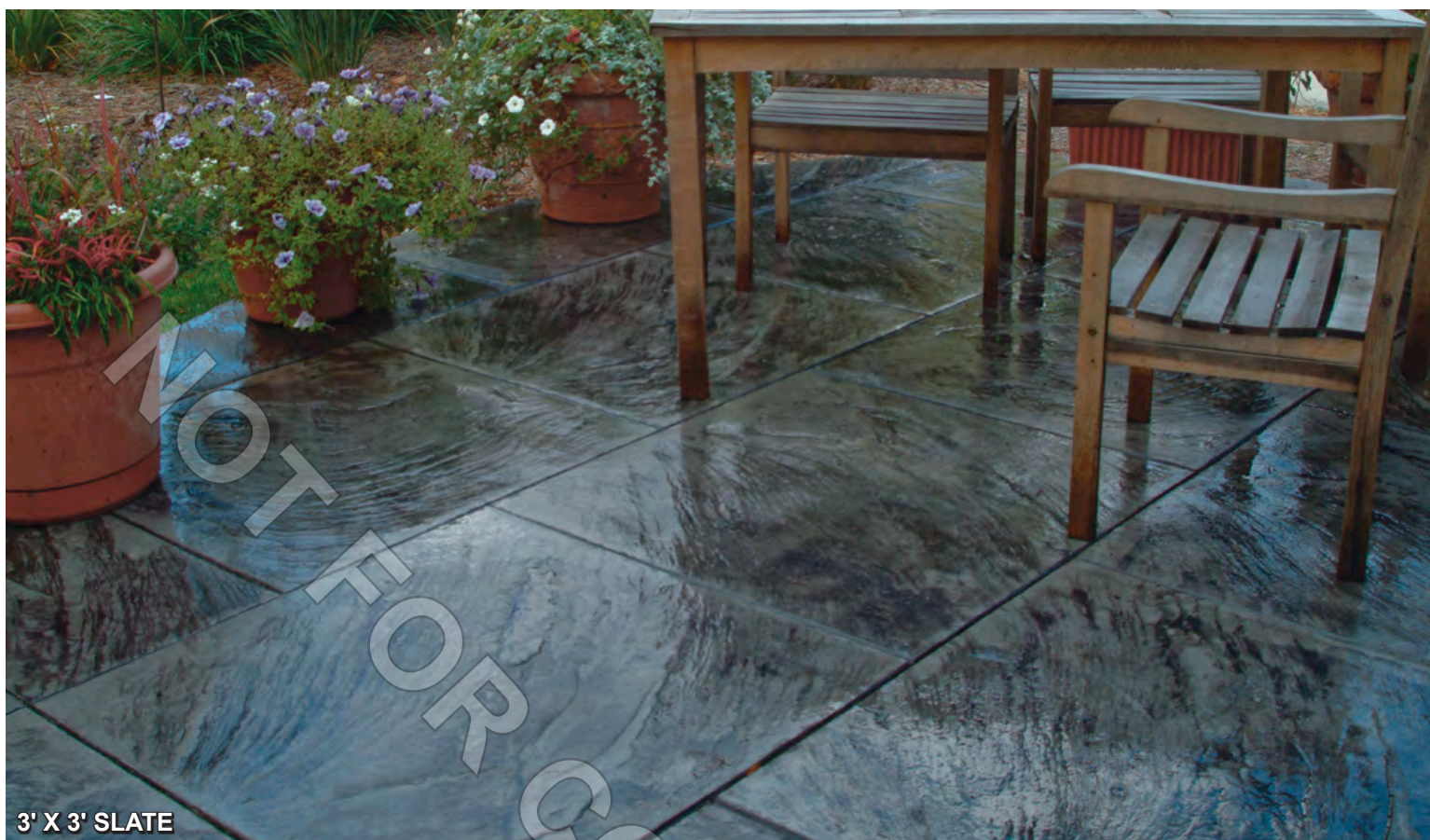
ASHLAR SLATE

BASE COLOR: P31 GRAY LINEN RELEASE COLOR: R26 CAPE COD GRAY



ASHLAR SLATE

BASE COLOR: P28 SLATE GRAY RELEASE COLOR: R12 STORM GRAY



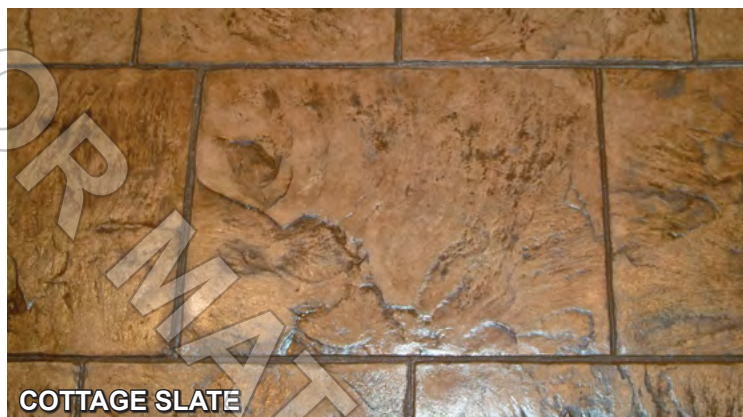
3' X 3' SLATE

BASE COLOR: U18 GULL GRAY RELEASE COLOR: R13 DEEP CHARCOAL



COTTAGE SLATE

BASE COLOR: U11 AUTUMN OAK RELEASE COLOR: R25 COLINA TAN



COTTAGE SLATE

BASE COLOR: U25 SANTA FE BUFF RELEASE COLOR: R14 WALNUT



DIAMOND TILE

BASE COLOR: U51 CLARY SAGE RELEASE COLOR: R26 CAPE COD GRAY



6" X 6" SLATE

BASE COLOR: P17 TERRA COTTA RELEASE COLOR: R12 STORM GRAY



6" X 6" SLATE

BASE COLOR: U24 GEORGIA CLAY RELEASE COLOR: R25 COLINA TAN



12" X 12" SLATE

BASE COLOR: U20 SMOKE RELEASE COLOR: R28 SLATE GRAY



18" X 18" SLATE

BASE COLOR: U26 LANON STONE RELEASE COLOR: R22 ARENA BUFF



BASE COLOR: P22 ARENA BUFF RELEASE COLOR: R23 SMOKE



BASE COLOR: U26 LANON STONE RELEASE COLOR: R23 SMOKE



BASE COLOR: U16 HARVEST WHEAT RELEASE COLOR: R12 STORM GRAY



FIELDSTONE

BASE COLOR: U12 SUNSET BEIGE
RELEASE COLOR: R26 CAPE COD GRAY



FIELDSTONE

BASE COLOR: U25 SANTA FE BUFF RELEASE COLOR: R14 WALNUT



FIELDSTONE

BASE COLOR: U13 MILLSTONE RELEASE COLOR: R23 SMOKE



VERONA COBBLESTONE

BASE COLOR: U13 MILLSTONE RELEASE COLOR: R23 SMOKE



VERONA COBBLESTONE

BASE COLOR: U13 MILLSTONE RELEASE COLOR: R13 DEEP CHARCOAL



VERONA COBBLESTONE

BASE COLOR: U13 MILLSTONE RELEASE COLOR: R26 CAPE COD GRAY



FOX VALLEY FLAGSTONE

BASE COLOR: P24 FRENCH CREAM RELEASE COLOR: R25 COLINA TAN



FOX VALLEY FLAGSTONE

BASE COLOR: U18 GULL GRAY RELEASE COLOR: R12 STORM GRAY



FOX VALLEY FLAGSTONE

BASE COLOR: P17 TERRA COTTA RELEASE COLOR: R13 DEEP CHARCOAL



18" X 36" BLUESTONE

BASE COLOR: U18 GULL GRAY RELEASE COLOR: R12 STORM GRAY



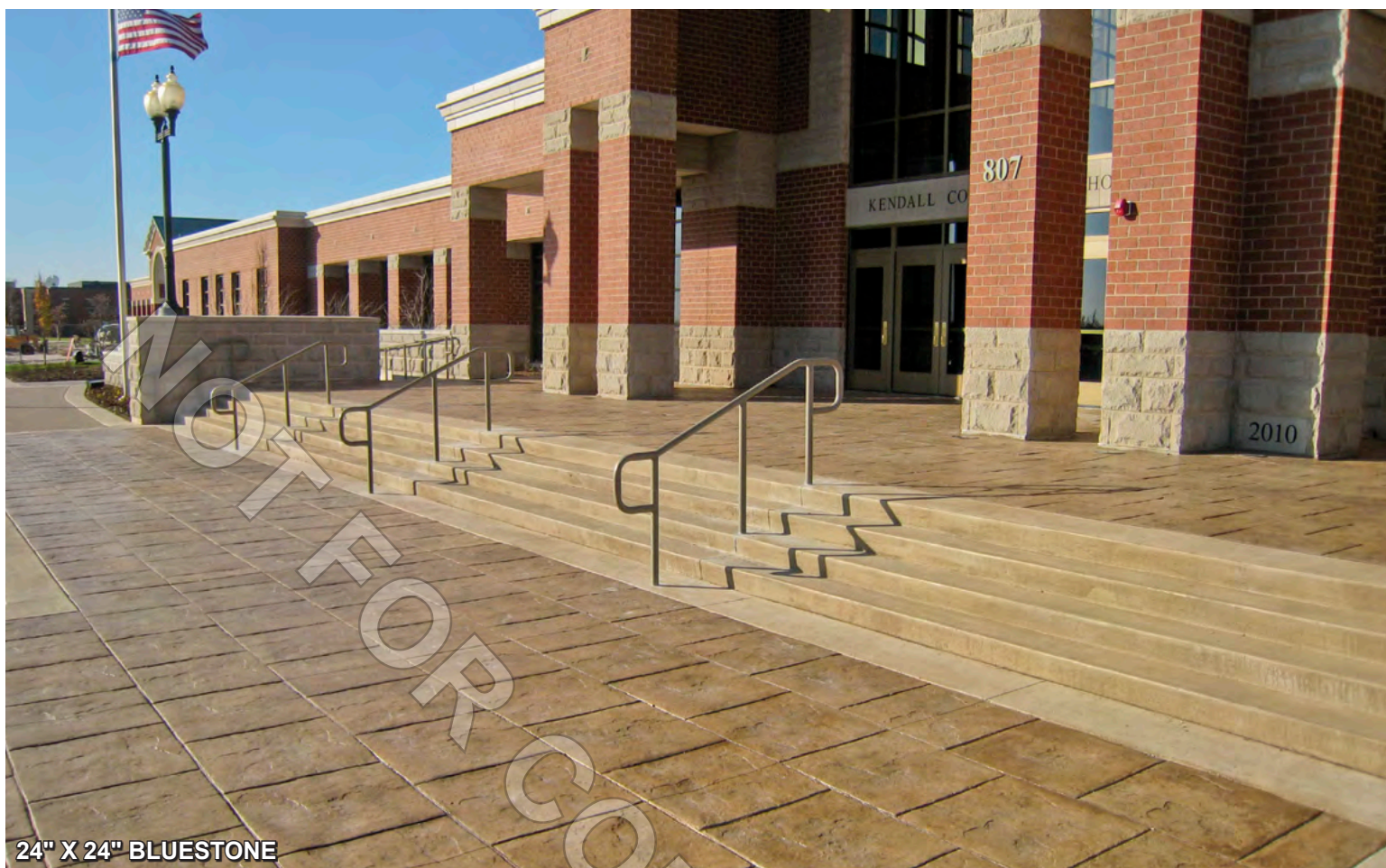
18" X 36" BLUESTONE

BASE COLOR: U21 SANDSTONE RELEASE COLOR: R22 ARENA BUFF



18" X 36" BLUESTONE

BASE COLOR: P28 SLATE GRAY RELEASE COLOR: R13 DEEP CHARCOAL



24" X 24" BLUESTONE

BASE COLOR: U16 HARVEST WHEAT RELEASE COLOR: R25 COLINA TAN



24" X 24" BLUESTONE

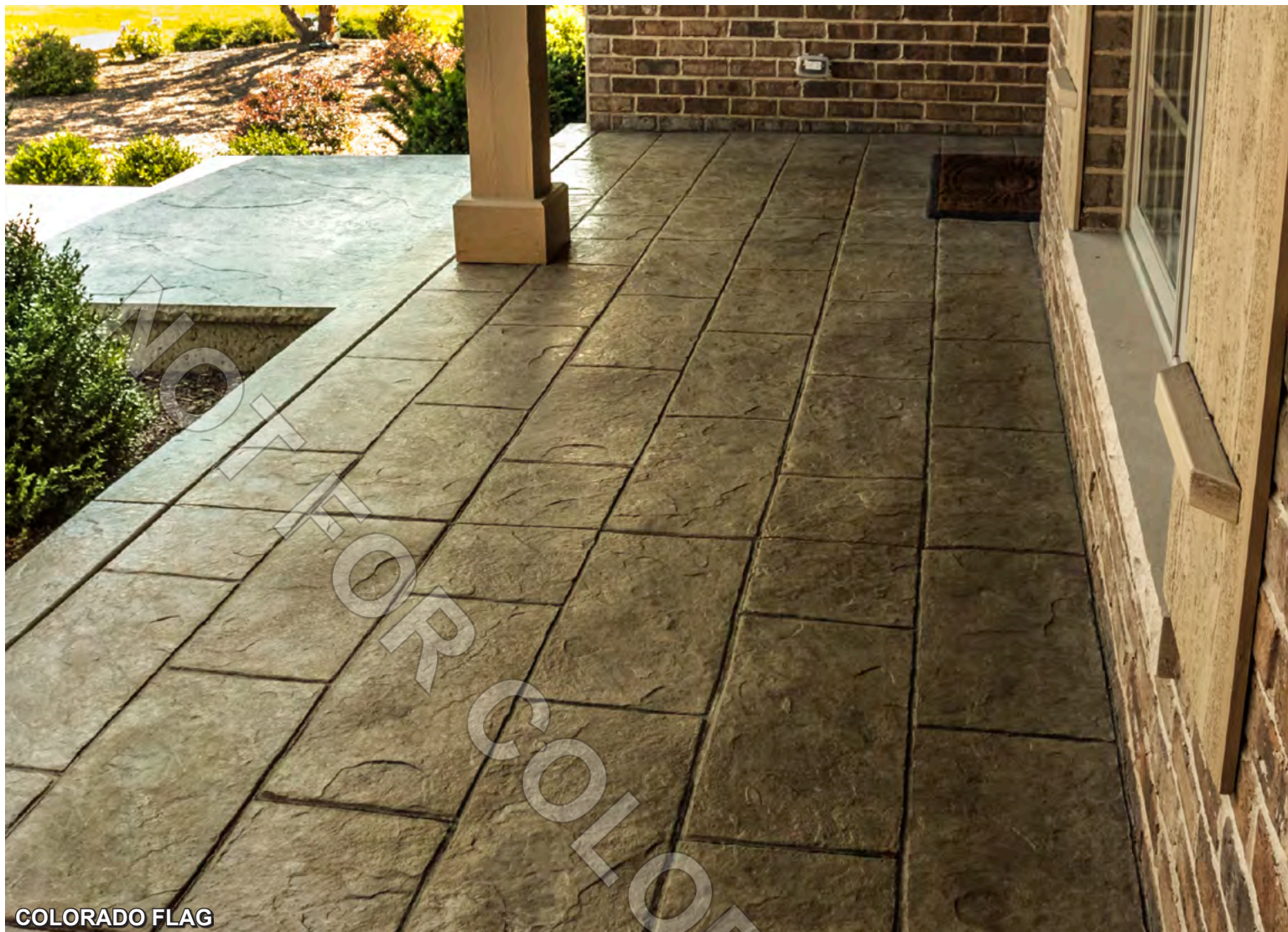
BASE COLOR: U19 FLINT* RELEASE COLOR: R28 SLATE GRAY

**Not shown on color chart*



24" X 24" BLUESTONE

BASE COLOR: P24 FRENCH CREAM RELEASE COLOR: R25 COLINA TAN



COLORADO FLAG

BASE COLOR: U13 MILLSTONE RELEASE COLOR: R12 STORM GRAY



COLORADO FLAG

BASE COLOR: U18 GULL GRAY RELEASE COLOR: R12 STORM GRAY



BASE COLOR: U29 SOAPSTONE RELEASE COLOR: R26 CAPE COD GRAY



BASE COLOR: P31 GRAY LINEN RELEASE COLOR: R26 CAPE COD GRAY



BASE COLOR: P12 STORM GRAY
 RELEASE COLOR: R12 STORM GRAY





TETRA STONE

BASE COLOR: U10 SONORAN TAN RELEASE COLOR: R14 WALNUT



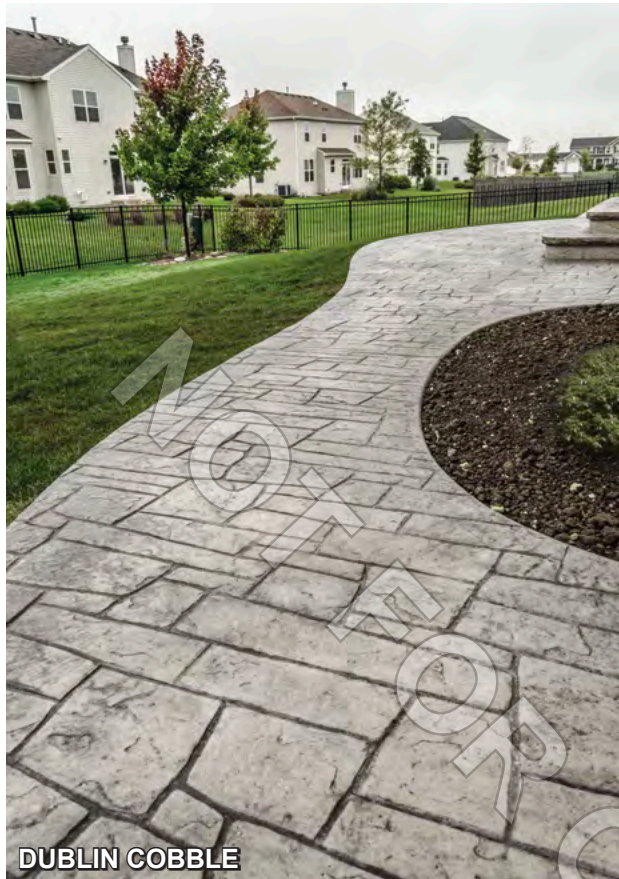
TETRA STONE

BASE COLOR: U18 GULL GRAY RELEASE COLOR: R11 GRAY PLUM



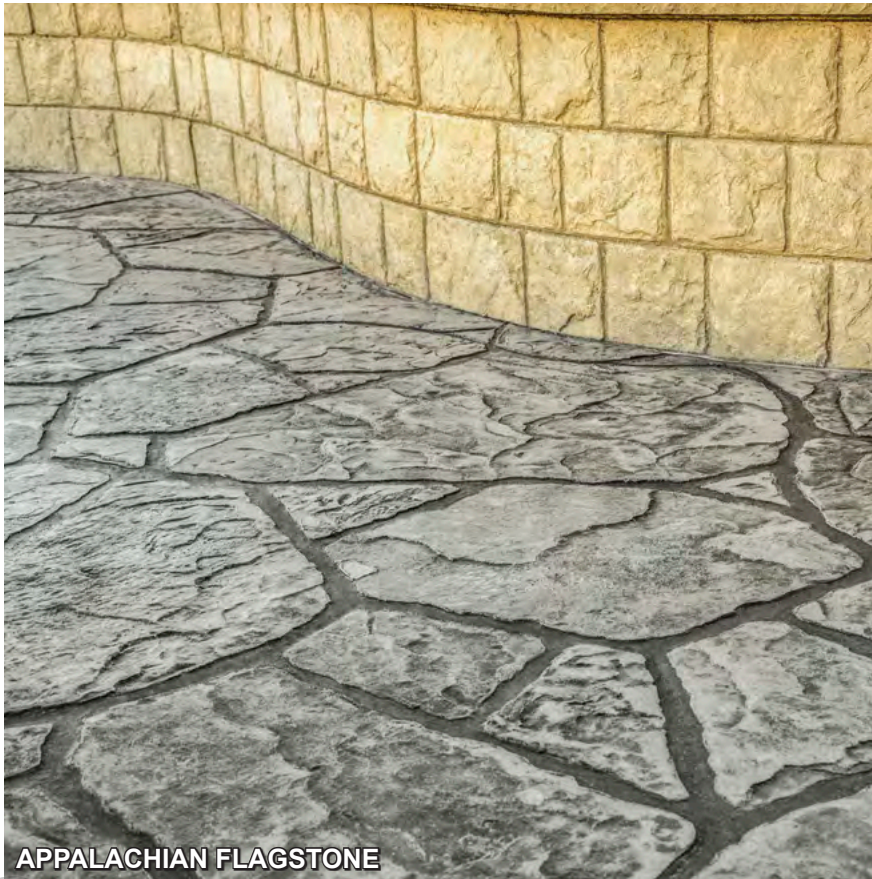
TETRA STONE

BASE COLOR: U18 GULL GRAY RELEASE COLOR: R23 SMOKE



DUBLIN COBBLE

BASE COLOR: U14 PEWTER RELEASE COLOR: R12 STORM GRAY



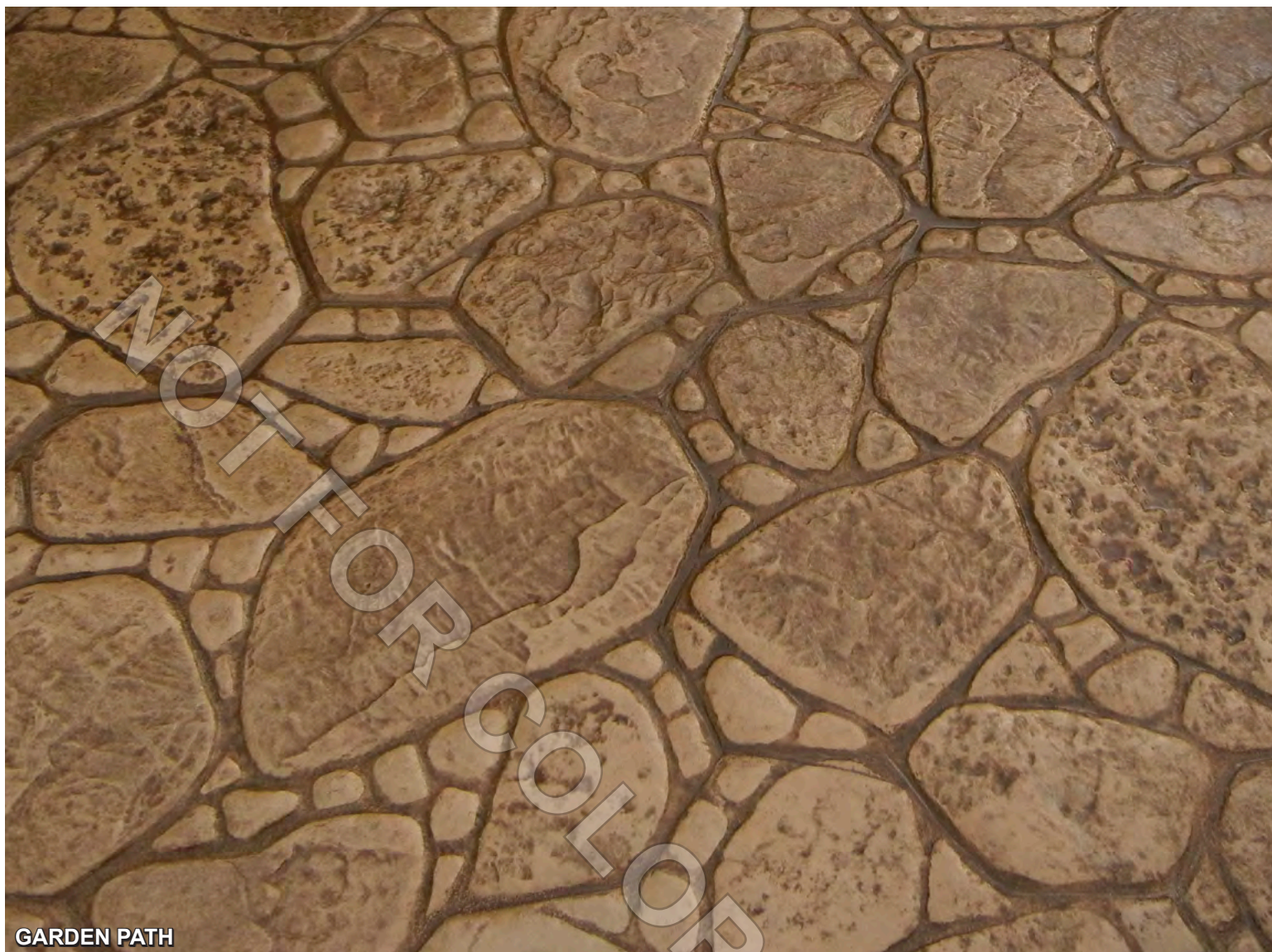
APPALACHIAN FLAGSTONE

BASE COLOR: P26 CAPE COD GRAY RELEASE COLOR: R12 STORM GRAY



APPALACHIAN FLAGSTONE

BASE COLOR: P24 FRENCH CREAM RELEASE COLOR: R22 ARENA BUFF



GARDEN PATH

BASE COLOR: P29 WHEAT RELEASE COLOR: R25 COLINA TAN



BROOK STONE

BASE COLOR: P29 WHEAT RELEASE COLOR: R29 WHEAT

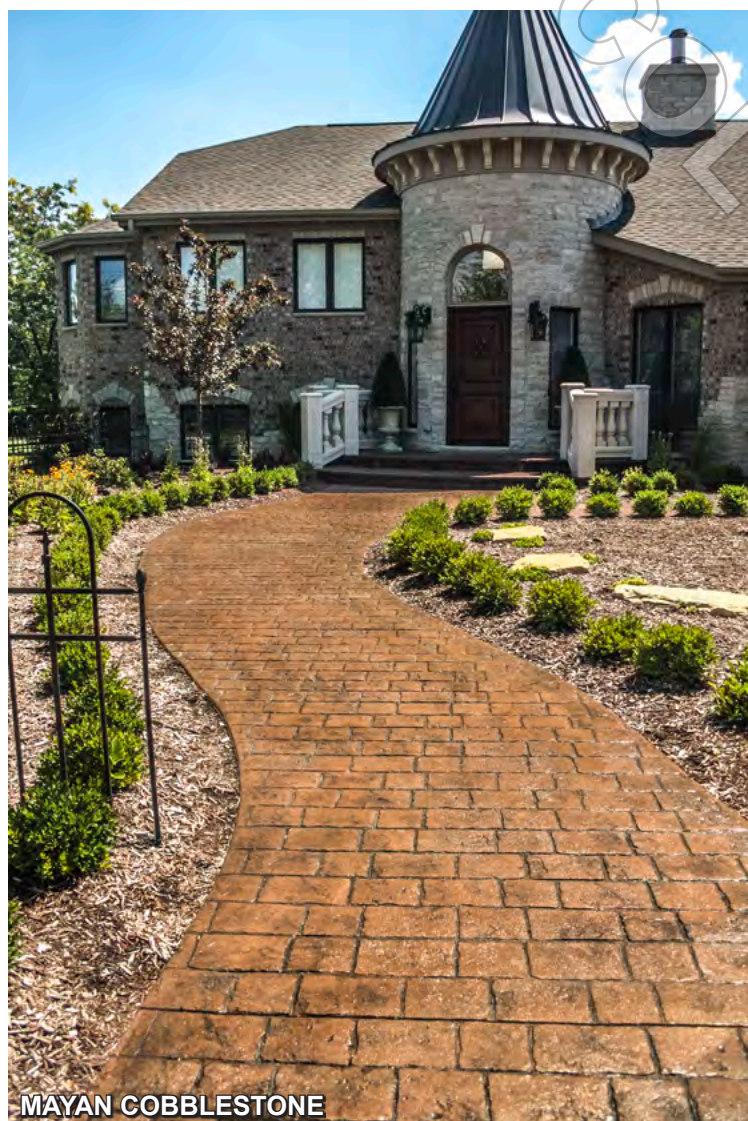


8" TUMBLED EDGE STONE

BASE COLOR: U31 WEATHERED TERRA COTTA RELEASE COLOR: R13 DEEP CHARCOAL



BASE COLOR: P15 BRICK RED RELEASE COLOR: R13 DEEP CHARCOAL



BASE COLOR: U24 GEORGIA CLAY RELEASE COLOR: R14 WALNUT



BASE COLOR: U14 PEWTER RELEASE COLOR: R12 STORM GRAY



MAYAN COBBLESTONE CIRCLE

BASE COLOR: U26 LANON STONE RELEASE COLOR: R12 STORM GRAY

5', 10', or 15'



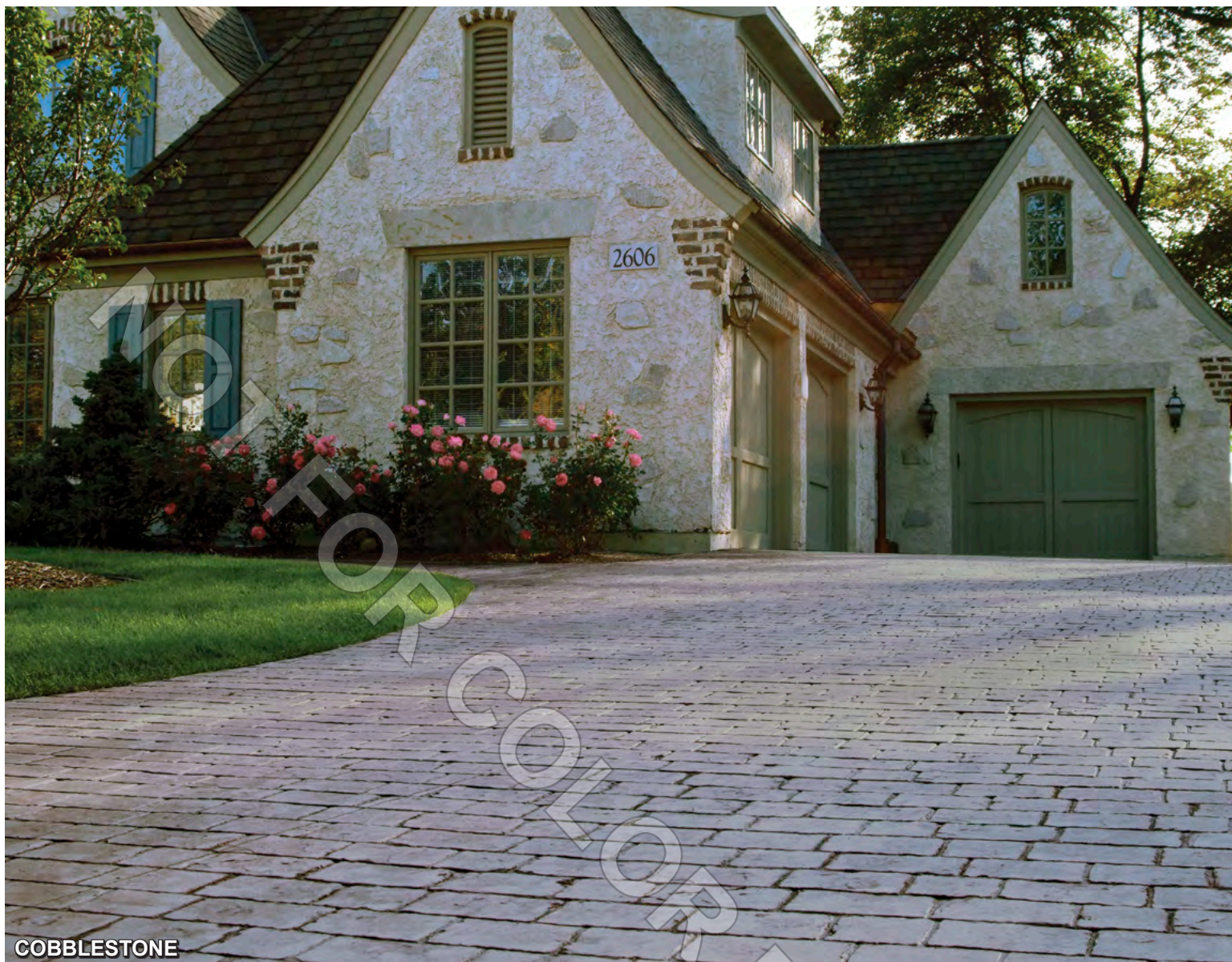
BALTIC COBBLESTONE

BASE COLOR: U37 SIENNA RELEASE COLOR: R13 DEEP CHARCOAL



BALTIC COBBLESTONE

BASE COLOR: U33 HAMPSHIRE RED RELEASE COLOR: R13 DEEP CHARCOAL



COBBLESTONE

BASE COLOR: P14 WALNUT RELEASE COLOR: R14 WALNUT



COBBLESTONE

BASE COLOR: U13 MILLSTONE
RELEASE COLOR: R12 STORM GRAY



COBBLESTONE

BASE COLOR: U20 SMOKE RELEASE COLOR: R23 SMOKE



BASE COLOR: P31 GRAY LINEN RELEASE COLOR: R26 CAPE COD GRAY



BASE COLOR: U12 SUNSET BEIGE RELEASE COLOR: R23 SMOKE



BASE COLOR: P26 CAPE COD GRAY RELEASE COLOR: R12 STORM GRAY



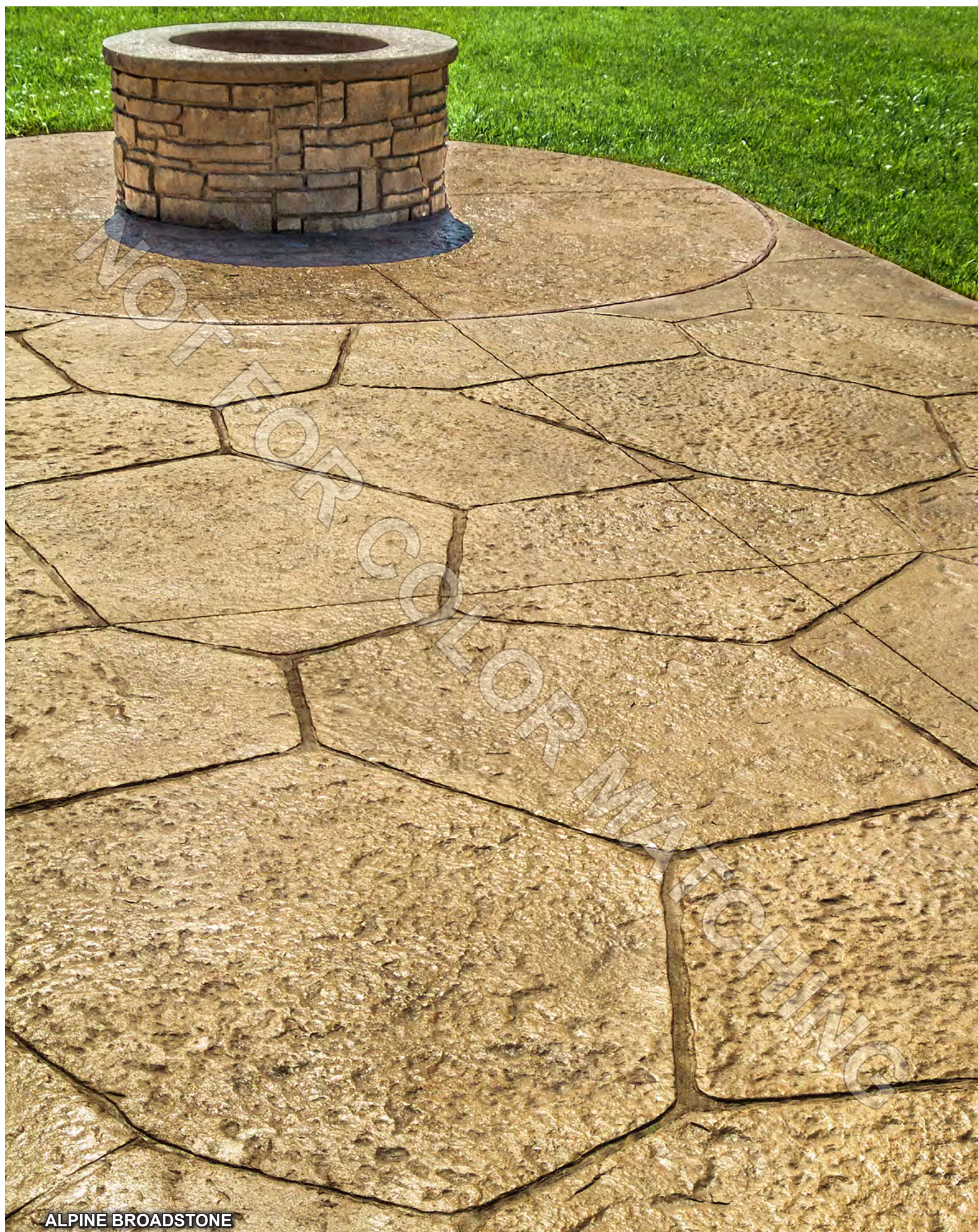
OCTAGON STONE

BASE COLOR: U24 GEORGIA CLAY RELEASE COLOR: R14 WALNUT



GRANITE HERRINGBONE

BASE COLOR: U13 MILLSTONE RELEASE COLOR: R13 DEEP CHARCOAL



ALPINE BROADSTONE

BASE COLOR: U16 HARVEST WHEAT RELEASE COLOR: R25 COLINA TAN

Stone sizes range from approx. 2' - 5'



Butterfield Color® was asked to develop a running bond brick pattern to be installed in the crosswalks of Pennsylvania Avenue throughout the National Mall. The result, **Pennsylvania Avenue Brick Running Bond**, was designed to reflect the heritage of our Nation's Capital and to comfortably accommodate foot traffic. The crosswalks were colored with **Uni-Mix® U377 Auburn*** released with **Butterfield Color® Clear Liquid Release** giving the completed project a rich, classic appearance well-suited to its historical surroundings.

**Not shown on color chart*



PENNSYLVANIA AVENUE BRICK RUNNING BOND

BASE COLOR: U34 BRICK RED RELEASE COLOR: R13 DEEP CHARCOAL



JUMBO BRICK RUNNING BOND

BASE COLOR: U31 WEATHERED TERRA COTTA
RELEASE COLOR: R14 WALNUT



PENNSYLVANIA AVENUE HERRINGBONE BRICK

BASE COLOR: U34 BRICK RED RELEASE COLOR: R12 STORM GRAY



OLD CHICAGO HERRINGBONE BRICK

BASE COLOR: U37 SIENNA RELEASE COLOR: R13 DEEP CHARCOAL



OLD CHICAGO RUNNING BOND BRICK

BASE COLOR: U34 BRICK RED RELEASE COLOR: R14 WALNUT



OLD CHICAGO RUNNING BOND BRICK

BASE COLOR: U34 BRICK RED RELEASE COLOR: R13 DEEP CHARCOAL



OLD CHICAGO RUNNING BOND BRICK

BASE COLOR: P15 BRICK RED RELEASE COLOR: R12 STORM GRAY



OLD CHICAGO RUNNING BOND BRICK

BASE COLOR: U37 SIENNA RELEASE COLOR: R12 STORM GRAY



NEW BRICK BASKET WEAVE

BASE COLOR: U34 BRICK RED RELEASE COLOR: R26 CAPE COD GRAY



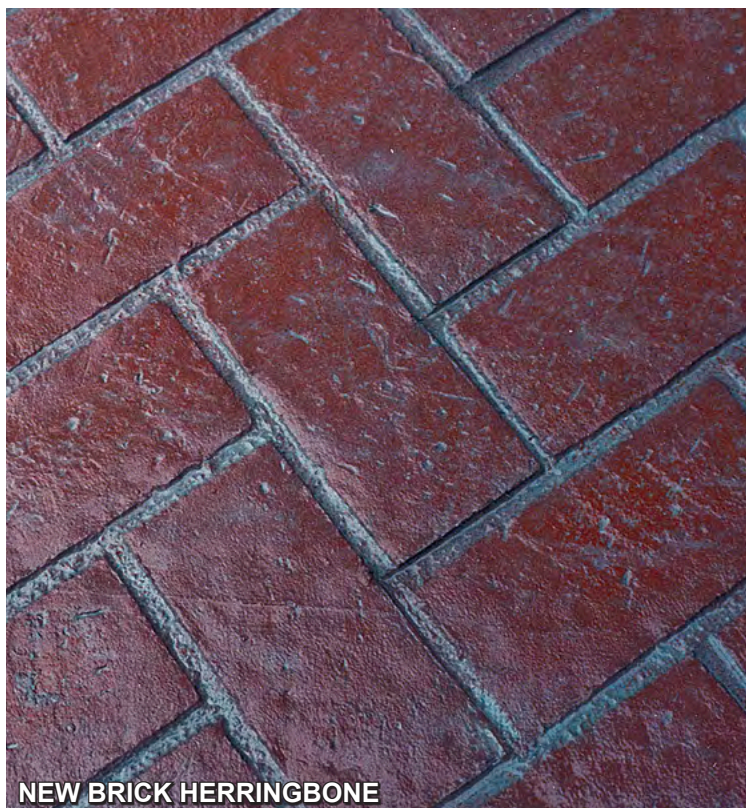
NEW BRICK BASKET WEAVE

BASE COLOR: U33 HAMPSHIRE RED
RELEASE COLOR: R13 DEEP CHARCOAL



NEW BRICK HERRINGBONE

BASE COLOR: U34 BRICK RED RELEASE COLOR: R12 STORM GRAY



NEW BRICK HERRINGBONE

BASE COLOR: P16 DARK RED RELEASE COLOR: R26 CAPE COD GRAY



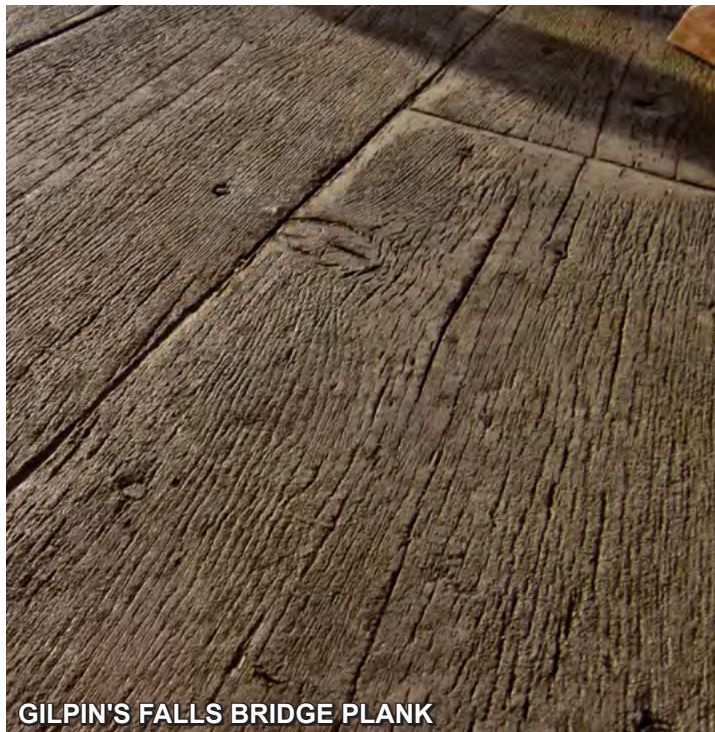
NEW BRICK RUNNING BOND

BASE COLOR: U24 GEORGIA CLAY RELEASE COLOR: R14 WALNUT



GILPIN'S FALLS BRIDGE PLANK

BASE COLOR: U18 GULL GRAY RELEASE COLOR: R13 DEEP CHARCOAL



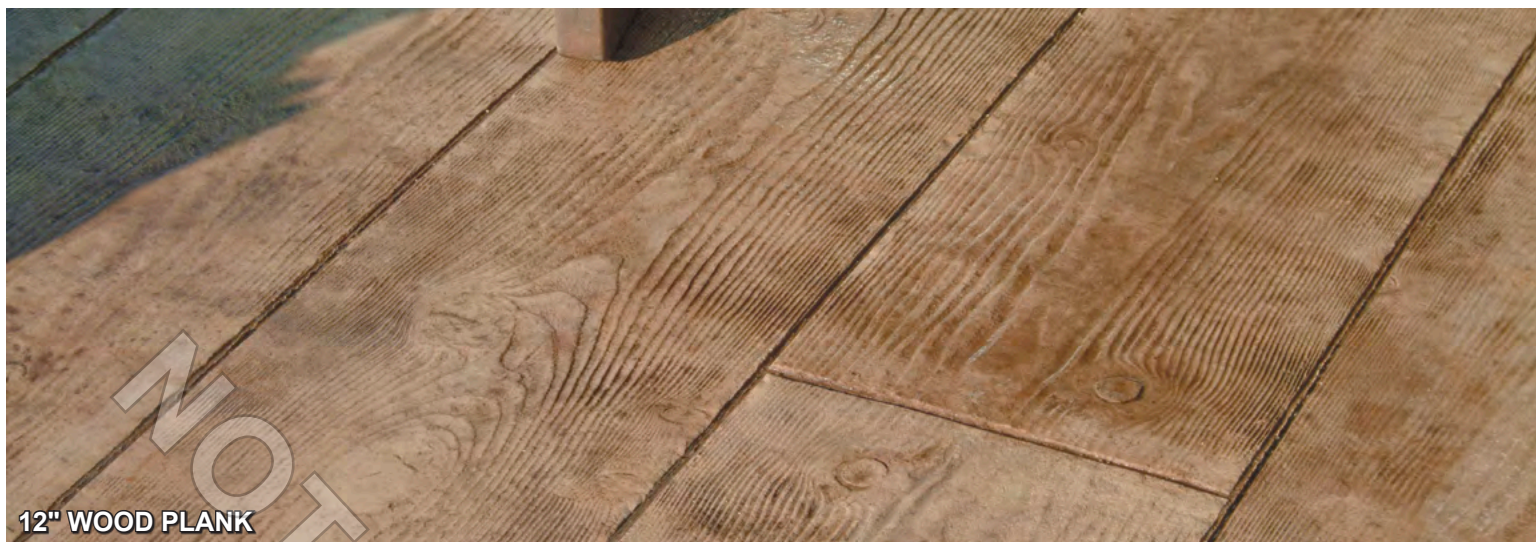
GILPIN'S FALLS BRIDGE PLANK

BASE COLOR: P14 WALNUT RELEASE COLOR: CLEAR LIQUID RELEASE



GILPIN'S FALLS BRIDGE PLANK

BASE COLOR: P14 WALNUT RELEASE COLOR: R12 STORM GRAY



12" WOOD PLANK

BASE COLOR: U20 SMOKE RELEASE COLOR: R25 COLINA TAN



12" WOOD PLANK

BASE COLOR: U37 SIENNA RELEASE COLOR: R13 DEEP CHARCOAL



6" WOOD PLANK

BASE COLOR: U37 SIENNA RELEASE COLOR: R12 STORM GRAY



6" WOOD PLANK

BASE COLOR: P23 SMOKE RELEASE COLOR: R14 WALNUT



6" WOOD PLANK

BASE COLOR: P25 COLINA TAN RELEASE COLOR: R12 STORM GRAY



3 1/2" HARDWOOD PLANKS

BASE COLOR: U11 AUTUMN OAK RELEASE COLOR: R14 WALNUT



3 1/2" HARDWOOD PLANKS

BASE COLOR: U25 SANTA FE BUFF RELEASE COLOR: R25 COLINA TAN



3 1/2" HARDWOOD PLANKS

BASE COLOR: U25 SANTA FE BUFF RELEASE COLOR: R14 WALNUT



HEAVY STONE TEXTURE

BASE COLOR: U11 AUTUMN OAK RELEASE COLOR: R26 CAPE COD GRAY



HEAVY STONE TEXTURE

BASE COLOR: U26 LANON STONE RELEASE COLOR: R23 SMOKE



HEAVY STONE TEXTURE

BASE COLOR: U26 LANON STONE RELEASE COLOR: R23 SMOKE



**SURFACE: HEAVY STONE TEXTURE
LINER: 4" CUT STONE FORM LINER**

BASE COLOR: U26 LANON STONE RELEASE COLOR: R25 COLINA TAN



HEAVY STONE TEXTURE

BASE COLOR: U26 LANON STONE
MULTIPLE RELEASE COLORS: R12 STORM GRAY, R25 COLINA TAN



OXFORD SLATE TEXTURE

BASE COLOR: P22 ARENA BUFF RELEASE COLOR: R29 WHEAT



OXFORD SLATE TEXTURE

BASE COLOR: U16 HARVEST WHEAT RELEASE COLOR: R13 DEEP CHARCOAL



BLUESTONE TEXTURE

BASE COLOR: U28 CHARCOAL RELEASE COLOR: R12 STORM GRAY



BLUESTONE TEXTURE

BASE COLOR: U16 HARVEST WHEAT RELEASE COLOR: R14 WALNUT



QUARTZITE STRATA TEXTURE

BASE COLOR: P22 ARENA BUFF RELEASE COLOR: R23 SMOKE



HADLEY CREEK SHALE TEXTURE

BASE COLOR: U26 LANON STONE RELEASE COLOR: R23 SMOKE



HADLEY CREEK SHALE TEXTURE

BASE COLOR: P22 ARENA BUFF RELEASE COLOR: R12 STORM GRAY



ITALIAN SLATE TEXTURE

BASE COLOR: U14 PEWTER RELEASE COLOR: R12 STORM GRAY



INFIELD: ITALIAN SLATE TEXTURE
BORDER: HEAVY STONE TEXTURE

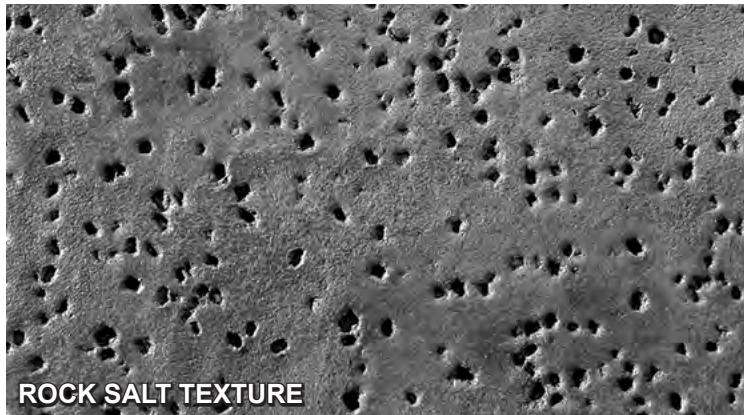
BASE COLOR: U26 LANON STONE RELEASE COLOR: R23 SMOKE





CHISELED SLATE TEXTURE

BASE COLOR: U13 MILLSTONE RELEASE COLOR: CLEAR LIQUID RELEASE



ROCK SALT TEXTURE

BASE COLOR: U28 CHARCOAL RELEASE COLOR: CLEAR LIQUID RELEASE



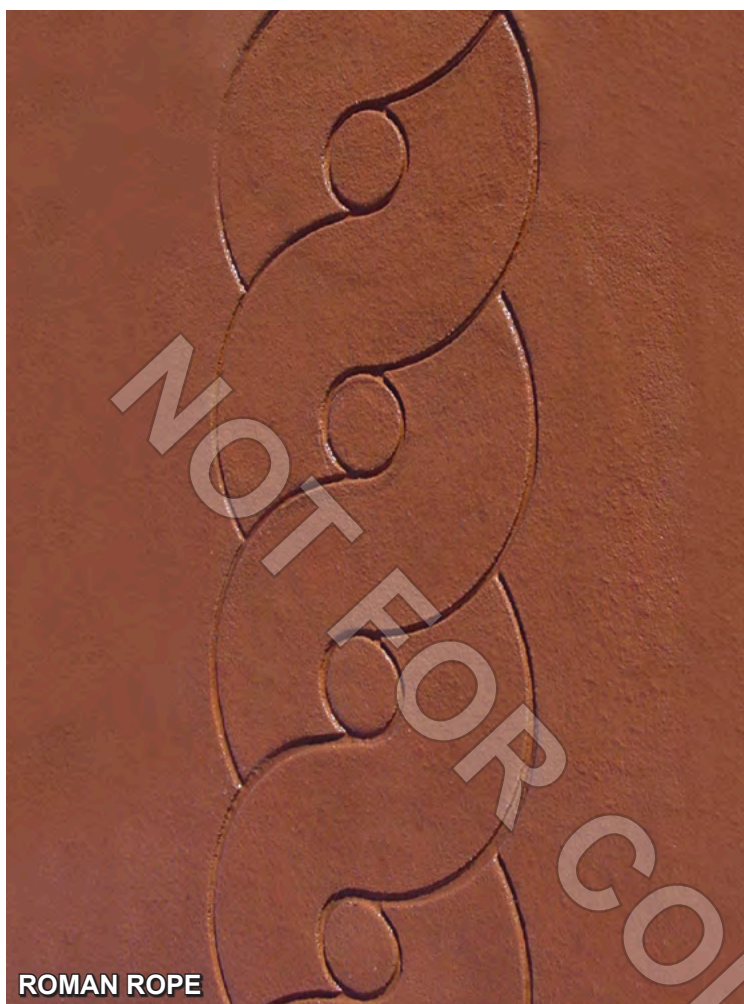
RIVER BOTTOM TEXTURE

BASE COLOR: U25 SANTA FE BUFF RELEASE COLOR: R14 WALNUT



**SURFACE: HEAVY STONE TEXTURE
LINER: 2 1/2" CANTILEVERED CUT STONE STEP LINER
WITH RISER STONE LINER**

BASE COLOR: U26 LANON STONE RELEASE COLOR: R23 SMOKE



ROMAN ROPE

BASE COLOR: U34 BRICK RED RELEASE COLOR: CLEAR LIQUID RELEASE



18" TUMBLED EDGE STONE WITH 4" STONE BORDER

BASE COLOR: P32 BONE RELEASE COLOR: R24 FRENCH CREAM



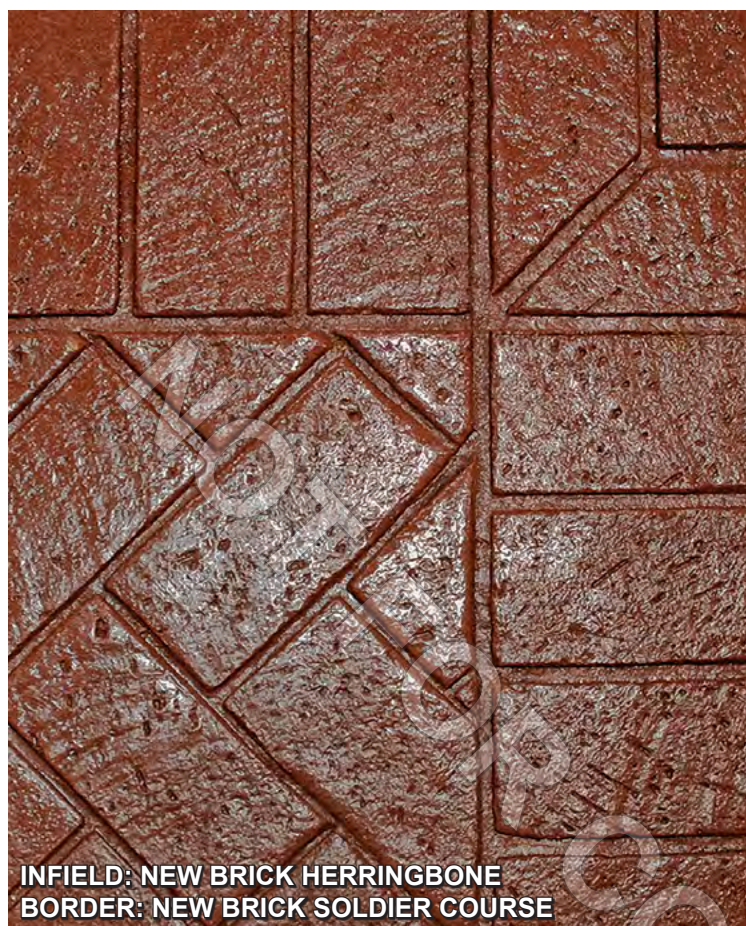
**INFIELD: OXFORD SLATE TEXTURE
BORDER: 4" X 4" GRANITE BORDER 2 ROW**

INFIELD — BASE COLOR: P29 WHEAT RELEASE COLOR: R25 COLINA TAN
BORDER — BASE COLOR: P23 SMOKE RELEASE COLOR: R26 CAPE COD GRAY



**INFIELD: CHISELED SLATE TEXTURE
BORDER: 4" X 4" GRANITE BORDER 3 ROW**

INFIELD — BASE COLOR: U26 LANON STONE
 RELEASE COLOR: R29 WHEAT
BORDER — BASE COLOR: P26 CAPE COD GRAY
 RELEASE COLOR: R13 DEEP CHARCOAL



**INFIELD: NEW BRICK HERRINGBONE
BORDER: NEW BRICK SOLDIER COURSE**

BASE COLOR: U33 HAMPSHIRE RED RELEASE COLOR: R15 BRICK RED



NEW BRICK SOLDIER COURSE STACKED

BASE COLOR: U37 SIENNA RELEASE COLOR: R14 WALNUT



**INFIELD: PENNSYLVANIA AVENUE
HERRINGBONE BRICK
BORDER: PENNSYLVANIA AVENUE SOLDIER COURSE**

BASE COLOR: U34 BRICK RED RELEASE COLOR: R14 WALNUT

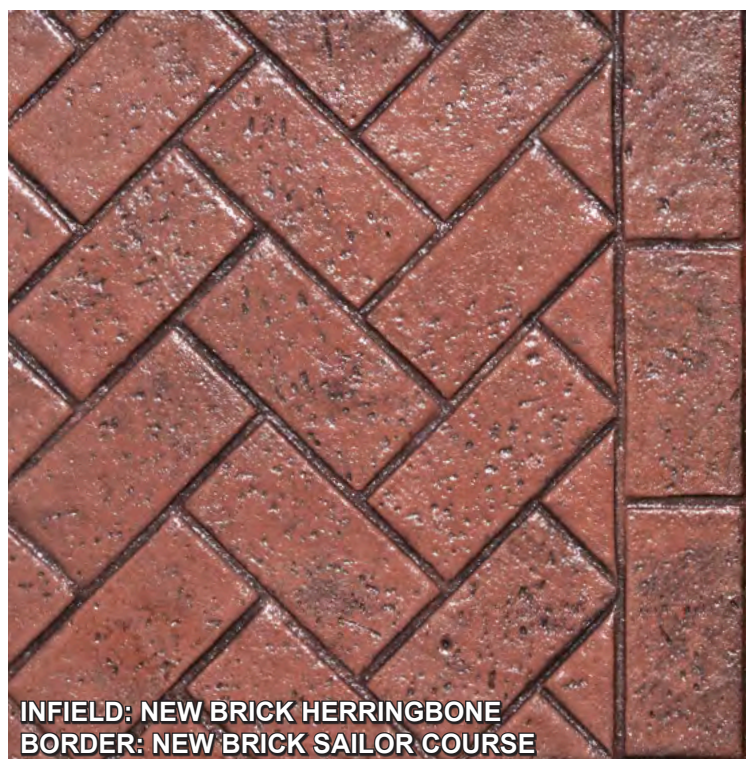


**INFIELD: OLD CHICAGO HERRINGBONE BRICK
BORDER: OLD CHICAGO SOLDIER COURSE**

BASE COLOR: U34 BRICK RED RELEASE COLOR: R12 STORM GRAY



INFIELD — BASE COLOR: P22 ARENA BUFF RELEASE COLOR: R29 WHEAT
BORDER — BASE COLOR: P17 TERRA COTTA RELEASE COLOR: R13 DEEP CHARCOAL



BASE COLOR: U33 HAMPSHIRE RED RELEASE COLOR: R12 STORM GRAY



BASE COLOR: U25 SANTA FE BUFF RELEASE COLOR: R13 DEEP CHARCOAL



48" WINDROSE

BASE COLOR: P31 GRAY LINEN RELEASE COLOR: R26 CAPE COD GRAY
Other colors achieved with numerous Perma-Tique® colors



48" COMPASS ROSE

BASE COLOR: P31 GRAY LINEN RELEASE COLOR: R23 SMOKE
Other colors achieved with numerous Perma-Tique® colors



96" WINDROSE 1/4 CIRCLE

BASE COLOR: P24 FRENCH CREAM RELEASE COLOR: R29 WHEAT
Other colors achieved with numerous Perma-Cast® Sierra Stain™ colors



LINER: ONE PIECE CANTILEVERED STEP LINER

BASE COLOR: U26 LANON STONE





LINER: 45° STONE EDGE STEP LINER

BASE COLOR: U26 LANON STONE



LINER: RISER STONE LINER

BASE COLOR: U13 MILLSTONE



BASE COLOR: U16 HARVEST WHEAT



BASE COLOR: U16 HARVEST WHEAT

Wall is not sealed. Caps are sealed.

***Butterfield Color® manufactures a complete line of products
for all your architectural concrete needs.***



This brochure is offered as a visual aid. When precise color matching is required, a job site sample is recommended.

625 W Illinois Ave
Aurora, IL 60506
800-282-3388
www.butterfieldcolor.com

© 2017 Butterfield Color, Inc. All rights reserved. | 11050 | LN11030

BUTTERFIELD®
COLOR



Engineered Concrete Performance®



Scan to view our photo gallery online